

FOR IMMEDIATE RELEASE

Contact:

Mike Lohman
Shure Incorporated
847-600-6417
lohman_mike@shure.com

Melody Demel
Formula PR
619-234-0345
demel@formulapr.com

SHURE RELEASES WIRELESS WORKBENCH® 6.11

LAS VEGAS—INFOCOMM Booth #1101, June 17, 2015— Expanding control for networked wireless audio systems, Shure Incorporated announced the release of Wireless Workbench® 6.11, available for download at www.shure.com/software. This latest version includes several new features to help manage every facet of wireless system performance over the network, from the planning stages to real-time monitoring during use.

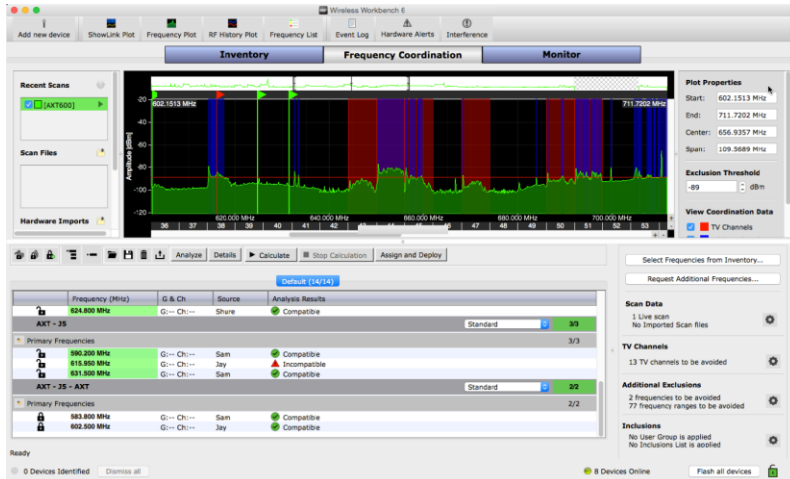
To improve workflow efficiency, Wireless Workbench 6.11 includes inventory batch edits, enabling parameters to be modified for a group of devices or channels at the same time. Users benefit from quick and easy configuration of naming, color-coding, and other parameters for multiple channels.

The Coordination Workspace enables frequency calculations for subsets of wireless inventory before deployment. These coordinations can be saved and recalled for different locations or even specific events within a production. A ranked list of compatible frequencies can be manually assigned to desired channels from this workspace as well.

An improved monitoring interface displays all channels with a common channel strip layout. Channel strips can be customized using the Channel Strip Designer and arranged into various layouts. Multiple channel strip arrangements can be stored in views and used to monitor a customized group of channels.

“Version 6.11 is the biggest release of Wireless Workbench to date,” said Nick Wood, Wireless Category Director. “From batch parameter changes on multiple devices to sandboxed frequency coordination using the new Coordination Workspace, Wireless Workbench 6.11 continues to set the standard for monitoring and control of networked wireless systems. It significantly enhances the control and management of Shure wireless products, saving users time and providing solutions requested by our customers.”

Wireless Workbench 6.11 is compatible with the Shure Axient® Wireless Management Network, UHF-R® Wireless Systems, ULX-D® Digital Wireless Systems, QLX-D™ Digital Wireless Systems, and PSM® 1000 Personal Monitoring Systems. The new version is available for download at www.shure.com/software. Wireless Workbench 6.11 is supported on Windows 7 and 8 as well as Mac OS 10.7, 10.8, 10.9, and 10.10.



Wireless Workbench 6.11 Frequency Coordination Tab



Wireless Workbench 6.11 Monitor Tab

About Shure Incorporated

Founded in 1925, Shure Incorporated (www.shure.com) is widely acknowledged as the world's leading manufacturer of microphones and audio electronics. Over the years, the Company has designed and produced many high-quality professional and consumer audio products that have become legendary for performance, reliability, and value. Shure's diverse product line includes world-class wired microphones, wireless microphone systems, in-ear personal monitoring systems, conferencing and discussion systems, networked audio systems, award-winning earphones and headphones, and top-rated phonograph cartridges. Today, Shure products are the first choice whenever audio performance is a top priority.

Shure Incorporated is headquartered in Niles, Illinois, in the United States. The Company also has regional sales and marketing headquarters in Eppingen, Germany, and Hong Kong, China, with more than 30 additional manufacturing facilities and regional sales offices throughout the Americas, EMEA, and Asia.