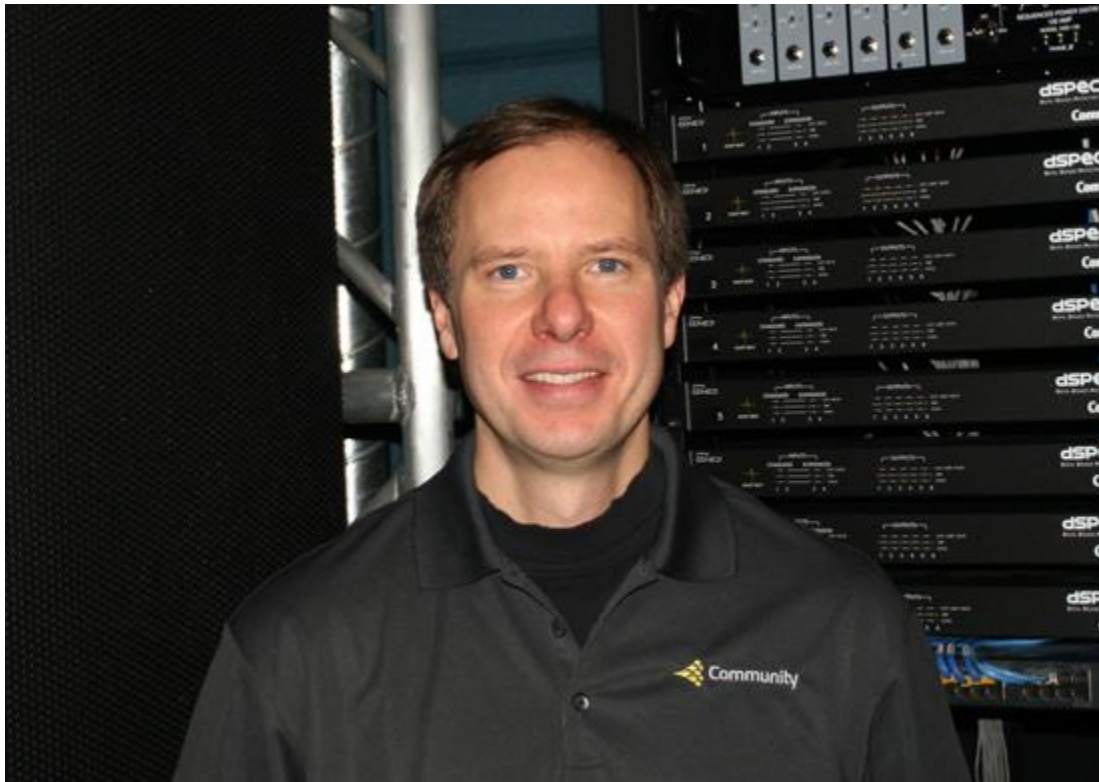


For Immediate Release



## Community Appoints David Prince as Director of Development Engineering



*David Prince*

**Chester, PA** – Community Professional Loudspeakers is pleased to announce the appointment of David Prince as Director of Development Engineering. Prince has over two decades of experience designing, modeling and measuring pro-audio loudspeakers and developing them for manufacturing. He comes to Community from Knowles Electronics where he was Product Development Manager. Previously, Prince

held the position of Director of Advanced Development for Tympany; he was Senior Research Engineer for International Jensen and he spent seven years as an Acoustic Consultant with Talaske.

Prince has a BS in physics from the University of Illinois and studied acoustics in a combined program of the University of Florida and Penn State University. He is a past chair of the AES Standards Committee on Loudspeaker Modeling and Measurement, serves on technical committees of the Acoustical Society of America and is a Board of Directors Emeritus member for the loudspeaker industry association, ALMA.

"I am delighted to join Community at this important time in its history," said Prince. "The company is well-respected worldwide and has an impressive line-up of high-quality products. I look forward to working with the Community team as we develop new loudspeakers and continue to advance our modeling and measurement programs."


Steve Johnson, CEO commented, "As Community positions itself for continued growth, David Prince is a strong addition to our Engineering team. David's academic background and years of experience as an engineer, audio consultant and technical leader will serve him well in this exciting new role."

**Links for further information:**

[Microsoft Word version of this press release](#)

[High-resolution version of the photo](#)

Find us on Facebook 

Follow us on  twitter

*Community Professional Loudspeakers is a developer and manufacturer of innovative loudspeaker systems for installed sound applications. Based in Chester, Pennsylvania, Community is an American original whose innovative products have shaped the professional sound industry since the company was founded in 1968. Visit [www.communitypro.com](http://www.communitypro.com) for more information.*

**Press Contact:** Grace Paoli, Marketing Communications Manager, [gpaoli@communitypro.com](mailto:gpaoli@communitypro.com)

**Visit us at:** [www.communitypro.com](http://www.communitypro.com)

*Copyright © 2015 Community Professional Loudspeakers, All rights reserved.*

*Please tell us if someone else should receive our press releases!*

**Our mailing address is:**

Community Professional Loudspeakers  
333 East 5th Street  
Chester, PA 19013