



Utilizing Mobile Credentials on K-12 Campuses for Rapid Emergency Response



Today's Presenters:



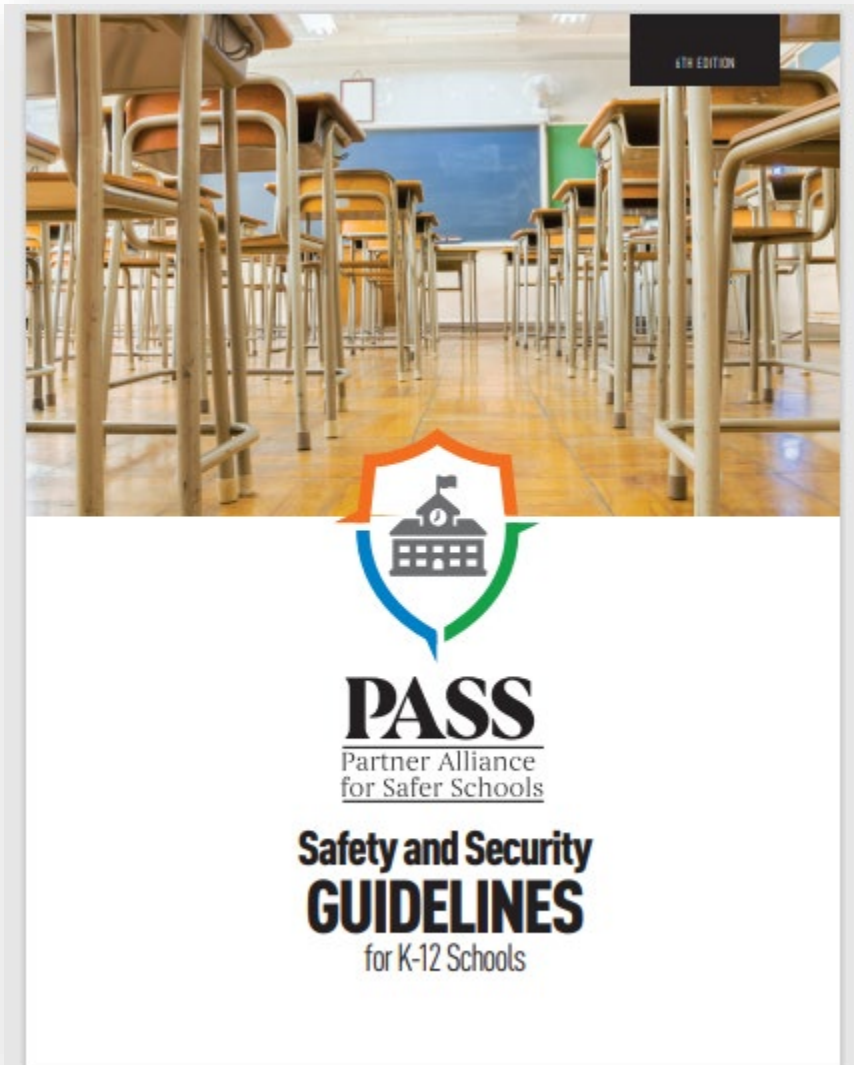
Lieutenant Colonel (Ret) Jeremy W. Gulley
President & Superintendent
[School Shield, LLC./Jay School Corporation](#)



Michael M. Garcia
National End User Manager, K-12 Safe Schools
[HID Global](#)



Guy M. Grace
Vice Chairman
[Partner Alliance for Safer Schools](#)



The Partner Alliance for Safer Schools (PASS) has a singular focus: To provide school administrators, school boards and public safety and security professionals with guidelines for implementing a layered and tiered approach to securing and enhancing the safety of school environments.

Established in 2014, PASS brings together expertise from the education community, law enforcement and the security industry to develop and support a coordinated approach that can assist school administrators in making effective use of proven security practices specific to K-12 environments and informed decisions on security investments

WWW.PASSK12.ORG

Session Overview – Mobile Credentials in K-12



KEY MOTIVATORS

The Smartphone Revolution / Core Advantages

The Vulnerability of Lost Cards

Credential Management Portal – Real-Time Verification & Validation

PRICE & COST SAVINGS for SCHOOLS

HUMAN RESOURCES, IT & POLICE DEPT CHALLENGES

ADMINISTRATION CHALLENGES

SECURITY & EMERGENCY MANAGEMENT – MOBILE FOR TACTICAL & MEDICAL RESPONSE

Law Enforcement, EMS, ESOP Plans & Active Shooter Drills

- Verified Issuance to 1st Responders with Preset Access to Schools

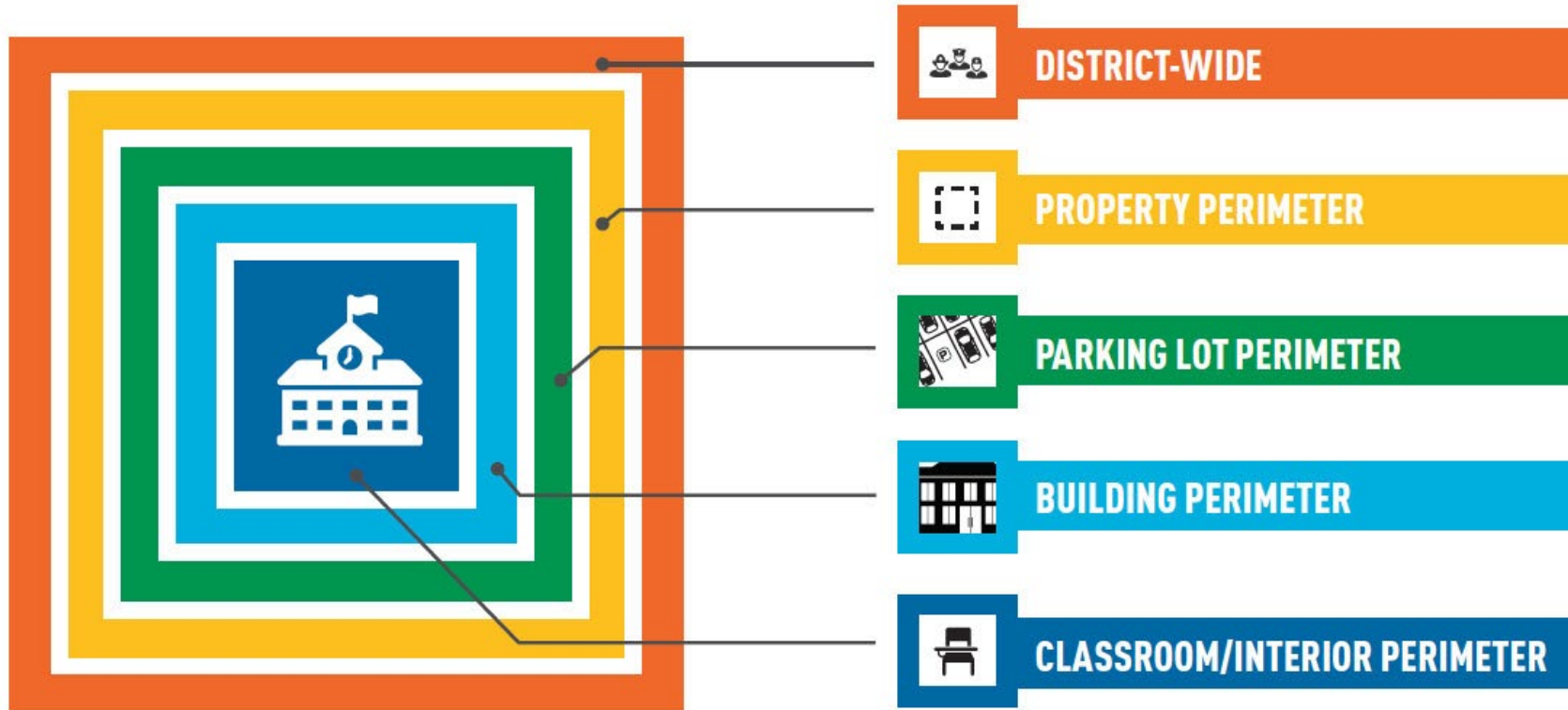
Keys, Cards & The Fire Department's Lock Box

- No more looking for Keys, Regardless of who is 1st on Scene

Mobile Nursing Staff – Stop the Bleed

Partner Alliance for Safer Schools

LAYERS OF PROTECTION



COMPONENTS OF LAYERS

- 1 Policies & Procedures
- 2 People (roles and training)
- 3 Architectural
- 4 Communication
- 5 Access Control
- 6 Video Surveillance
- 7 Alarms

Access Control should exist at multiple layers

What is the PASS Position on Mobile Credentials



Mobile Credentials, when used with the First Responder door numbering system for card reader locations, are a true game changer. They offer un-matched Rapid Emergency Response for Law Enforcement & EMS personnel. When used in combination with Mobile Duress (pinpoint accuracy) and Secure Vestibule entrances (door #1), they could easily become the next “standard issue” in the First Responder Toolbelt.

Mobile Credentials offer solutions for Emergency Situations across All Hazards in the K-12 Environment. As an Incident Command tool for Multiple Mass Campus Events where every school is put on Lockdown, they are invaluable; enhancing the ability for students to learn and teachers to teach.

- Guy Grace, Vice-Chairman



The Smartphone Revolution

6.92B Smartphone users
<90% world's population

5hrs and 24min
Average time spent on
mobile device each day

270M (<80%) own
Smartphones in the U.S.
With annual sales of +/-
\$75B



96 times per day
Average person checks
their smartphone every 10
min

We all have one – we won't lend it out to anyone – it has a password and biometric to protect it if lost – if we do lose it, we can track it – and we will go back for it if we forget it.

Core Advantages of Mobile Credentials



Sustainability



(Cyber) Security



Credential
Management



User Experience

People Misplace, Lend & Lose Cards & Key Fobs

- According to a recent Buildings.com survey, **17.3% of plastic cardholders reported losing their physical credential at least once per year**
- That same survey found that organizations with an average headcount around 40,000 lose or misplace 10,278 physical credentials annually
- Creates Myriad Burdens on HR & IT Departments and a Financial Burden on School Districts to Replace, Decommission & Re-issue Credentials
- **Lending out Keys & Hard Credentials on Campus happens often for Convenience**
- Schools have a Huge Problem with Key Management, Copying & Selling Keys for after hours Gym & Weightroom Access.
- **Gifting Keys to Friends & Family happens.**



Lost Cards & Key Fobs = Vulnerability

- A lost card is a major vulnerability to your campus until it is reported. **Employees may not report quickly - when they have to pay for replacement credentials.**
- Hours, days, weeks...all the while that card may still be allowing someone access to the school
- The Employee now needs a NEW card. What does that provisioning process look like? Time, materials, distribution... It may be longer and costlier than you think.
- You should not be willing to accept this vulnerability considering the value of the assets that you are protecting



Key Motivators for K-12 Mobile Credentials

PRICE / COST

- Save on the cost of Plastic Cards
- Save on Consumables & Card Printers
- Mobile Credentials can be Re-issued and are Re-usable
- 1 Credential can be used on up to 5 Devices
- Save on Time & Labor Cost (can be up to \$50 per card all in)



Human Resources & Card Issuance Department



HUMAN RESOURCES & IT DEPARTMENTS

- Activate & Deactivate on Demand
- **IT = Service Tickets / HR = New Hires**
- Badging Nightmares (IT Distress Calls)
- Long Lines at Registration & Peak Times
- Lost/Mis-placed & Forgotten Badges
- **No Supply Chain Issues** / Simplified Purchase
- No more card boxes on the Shelf
- **Contractors** - Credential Management
- **Food Service** & Delivery Schedules
- Installing Mobile Enabled Readers are the Backbone
- Easy Migration for IT from Plastic to Mobile



School Administration

ADMINISTRATION

- Start with the Administration Building for Maximum Impact & Acceptance
- **Substitute Teacher Access Issues Solved**
- Board, PTA, Night Class & Booster Clubs
- Portable Classrooms - Access to Main Building
- Credential Parents & Key Stakeholders
- Credential Frequent Business Visitors (those with MOUs)
 - State Agency Visitors, Social Workers, SPED Co-Ops, BOCES & ESC Trainers, Event Coordinators (Special Olympics, Health Fairs, Vaccine Clinics, etc.)



School Security Department



SECURITY & EMERGENCY MANAGEMENT - TACTICAL & MEDICAL RESPONSE

- **Law Enforcement, EMS, ESOP Plans:
Provisioning after Active Shooter Drills**
- **Replaces Keys, Cards & the need to
access the Fire Department's Lock Box**
- School Nursing Staff – CPR & Stop the
Bleed in any Emergency Event
- American Red Cross Staff (All Hazards)
- State Dept of Emergency Management
Staff – Hurricane, Tornado & Flood



SECURITY & EMERGENCY MANAGEMENT –TACTICAL- EMERGENCY- MEDICAL RESPONSE

READERS DEPLOYED BASED ON

- First Responder Numbering System
- Internal Partitioning Where Applicable must include Mobile Credential capability

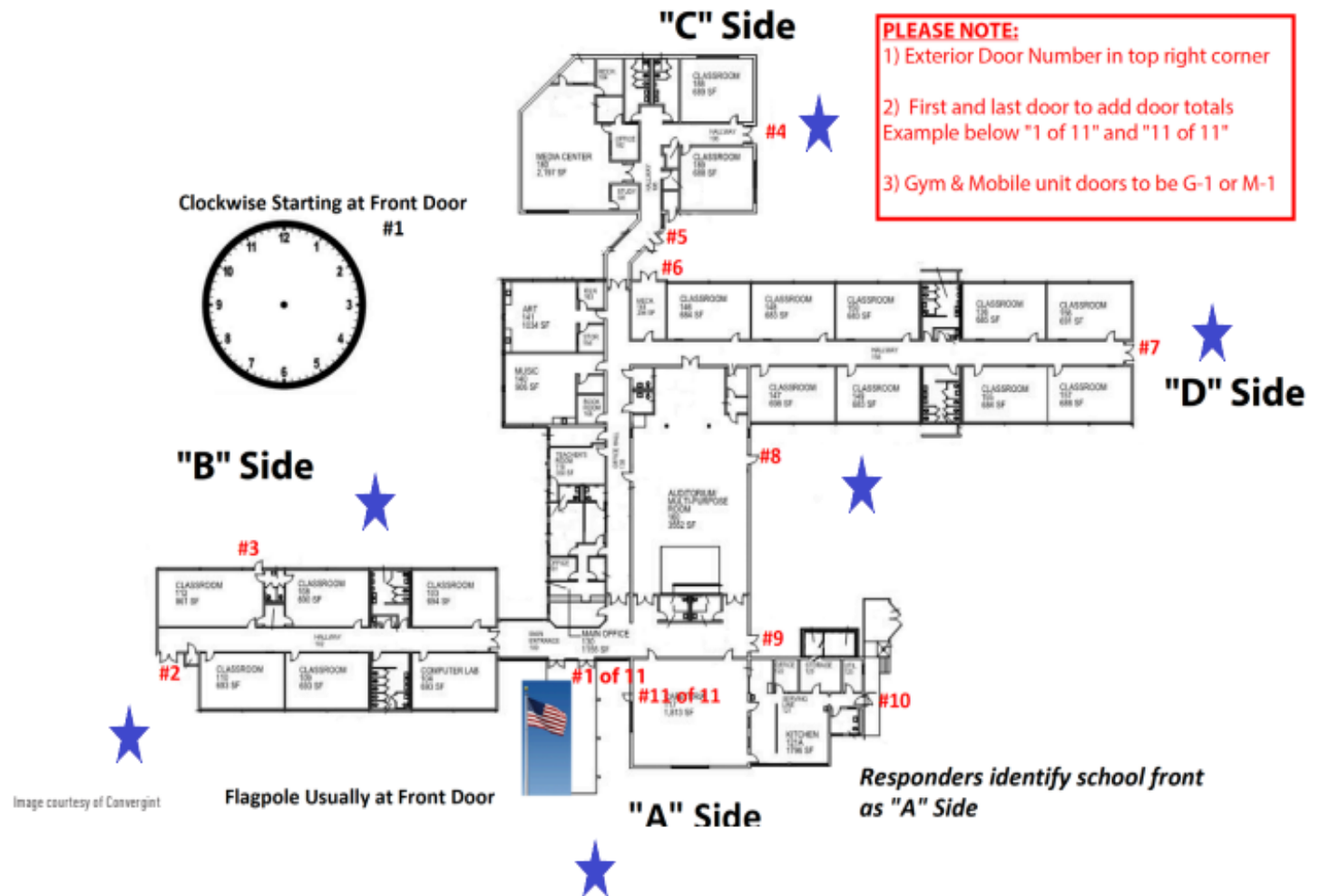


Image courtesy of Convergent

MOBILE as an ENABLING TECHNOLOGY:

Combining Mobile Rapid Access & Location Services

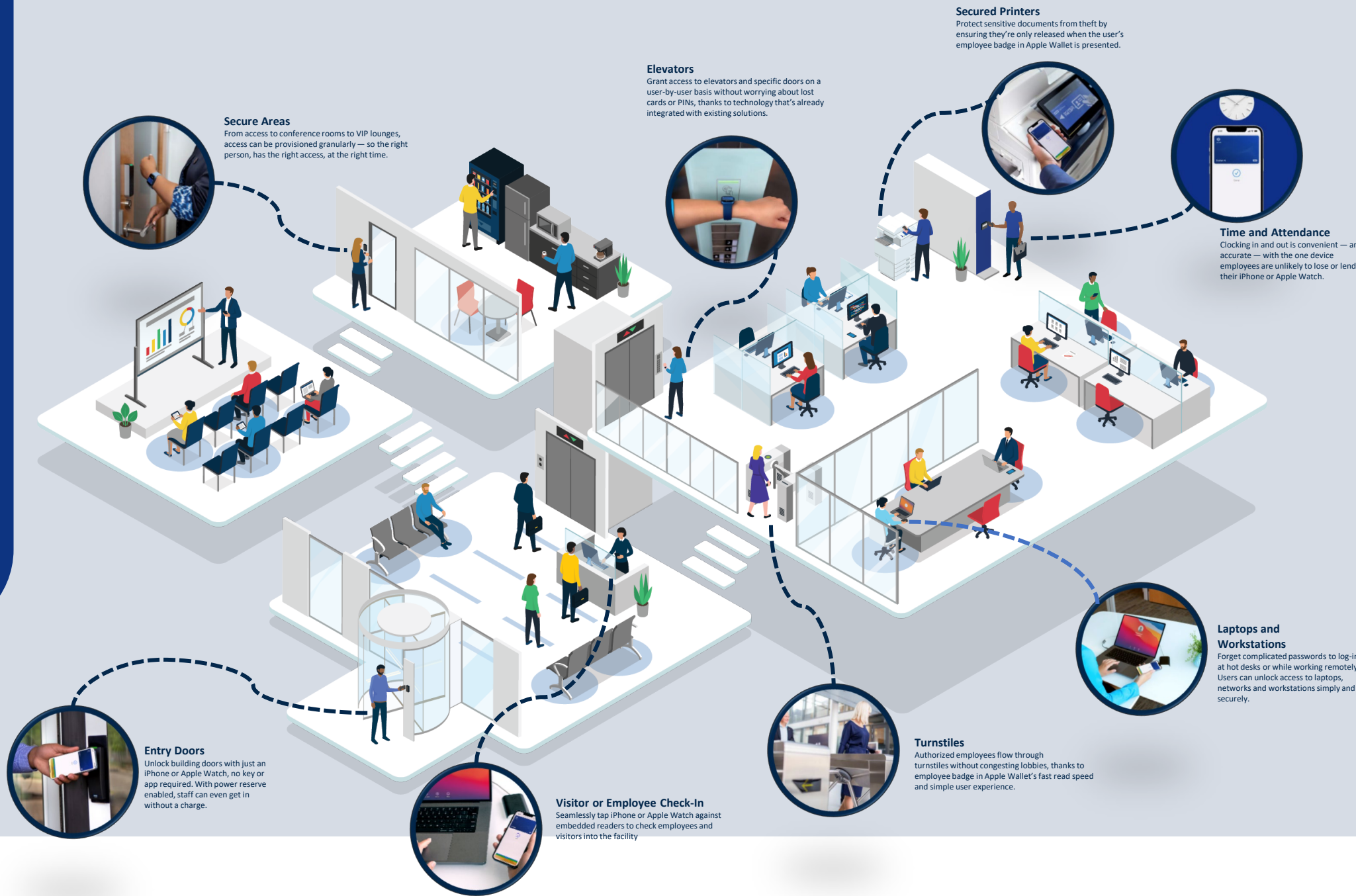
In a crisis, the speed of response is tied to responders knowing the location. In a small school with 1 main entrance, precision may not be critical. **In large campuses with multiple floors, rooms, entrances, or buildings, SROs and 1st Responders need to know exact locations to respond appropriately and distinguish between floors.**

Sensors, Beacons and Duress systems with RTLS, mounted around the campus can alleviate this problem. As staff move throughout the school, body-worn pendants and “wearables” with a location capability will deliver pinpoint accuracy.

Mobile Credentials will empower Law Enforcement to enter into the door or doors closest to the exact location of the mobile duress alert. Saving precious minutes, when seconds count - and allowing medical personnel to deliver “stop the bleed” assistance to save lives.

THE UNIVERSITY MODEL :

Mobile
Credentials to
Access
everything on
Campus from
Doors to Data
and Dorms.



IT's A NEW WORLD



Mobile is now a Basic Need

Q&A SECTION





**SCHOOL SAFETY AND SECURITY
CHECKLIST**

DOWNLOAD TODAY @ www.PASSK12.org